

PERSONAL NAVIGATOR



Sunrise 7:21 a.m. Sunset: 5:44 p.m.
 Evening Attire: Cruise Casual
 All Ashore: 1:00 p.m. All Aboard: 5:30 p.m.
 Tuesday: Partly Cloudy High: 78°F/26°C
 Wednesday: Partly Cloudy High: 78°F/26°C

TUESDAY, FEBRUARY 5, 2013

COSTA MAYA, MEXICO



On the eve of their graduation, three best friends go on a magical journey down the wishing well. A host of Disney characters help them discover the connection between children who are becoming adults, and adults who stay in touch with being a kid at heart.

**Walt Disney Theatre
 Deck 3 & 4, Forward
 6:15 p.m. & 8:30 p.m.**



Assistance available at the entrance to the Walt Disney Theatre 30 minutes prior to show time.



Costa Maya Port Information

Costa Maya is a tourist region located on the Yucatán Peninsula 100 miles south of Playa del Carmen near the border of Belize in Mexico. Comprised of two small villages, Mahahual and Xcalak, Costa Maya provides a picture-perfect getaway the entire family is sure to love.

Early Mayans were predominant in the area from 200 B.C. to 900 A.D. In the 16th century, English pirates ravaged the coast and battled the Spanish for control of the region. At the end of the 19th century, the Mexican Navy took over the land. A treaty with Britain was signed soon after limiting the territorial rights of Mexico, thereby forcing Mexico to build a new trade port in Xcalak.

By the 1950's, the economy was flourishing as businesses - including stone and wood construction companies - made the area a supply center for the region. Steady growth continued until the mid-1990's when the government outlined a plan to make Costa Maya a tourist destination. Today, tourism is Costa Maya's main economic revenue stream and it's easy to understand why, thanks to the island's plethora of unspoiled natural beauty that has remained untouched for thousands of years.

DOCKING

The ship will dock at the Puerto Costa Maya, located approximately 1/2 mile north of Mahahual.

the Magic DAVE SHOW

FAMILY CABARET

Featuring the Comedy & Magic of David Williamson, as he entertains the entire family in this fun-filled show.

The Tube,
 Deck 4, Aft,
 7:30 p.m.

Don't Miss:

Disney Animation: Persistence of Vision
 D Lounge, Deck 4, Midship - 9:30 a.m.

Go behind the scenes at Walt Disney Animation Studios and learn the principles that make animation work, and try your hand at creating your own easy animation demonstration in this fun and fascinating enrichment program.

Shopping Highlights *NO*
 Buena Vista Theatre, Deck 4 & 5, Forward. - 11:00 a.m.
 Everything you need to know about shopping ashore from Diamonds to Mexican Vanilla. Free Charm for all who attend. *What charm?*

Disney Tune Trivia *Need Stingray*
 La Piazza, Deck 4, Aft - 11:00 a.m.
 Join your Cruise Staff and pianist Andy Johnson, as they put your Disney Tune knowledge to the test.

50 Movie Quotes Trivia (18+)
 O'Gills Pub, Deck 4, Aft - 4:00 p.m.
 "Life is like a box of Chocolates" Know the movie? Join your Cruise Staff and test your Movie Quote knowledge.



Please check your tour tickets for meeting times and locations. Visit the Port Adventures Desk, Deck 5, Midship for any questions.

DINNER MENU

Animator's Palate: Prince & Princess Menu
 Enchanted Garden: Prince & Princess Menu
 Royal Court: Prince & Princess Menu

DRINK OF THE DAY

Key Lime Margarita (Alcoholic)
 Cranberry NO-Jito (Non Alcoholic)

IMPORTANT NUMBERS

Fire/Security: 7-3001
 Medical Emergency: 7-3000
 Health Center: 7-1923

FUN FOR ALL AGES HIGHLIGHTS

WAKE UP WITH DISNEY JUNIOR

D Lounge, Deck 4, Midship - 8:30 a.m.

What happens when you experience unlimited fun with your favorite Disney Junior shows? An exciting dance party designed especially for pre-schoolers ages seven and under.



DISNEY VACATION CLUB GROUP PREVIEW

The Tube, Deck 4, Aft - 10:00 a.m.

Want to learn more about taking magical vacations year after year? Stop by our interactive group presentation to find out more information from a Disney Vacation Club representative.



DISNEY TUNE TRIVIA

La Piazza, Deck 4, Aft - 11:00 a.m.

Join your Cruise Staff and pianist Andy Johnson, as they put your Disney Tune knowledge to the test.



DISNEY CHANNEL ON DECK

Deck Stage, Deck 11, Midship, Deck 11 - 11:00 a.m.

Don't change that channel! It's time for a Disney Channel pool party! Your Cruise Staff will host an exciting day of games and contests in between your favorite Disney Channel shows! So sit back, relax, and enjoy the sun!

PLAYHOUSE D LOUNGE

D Lounge, Deck 4, Midship - 5:00 p.m.

Calling our youngest of cruisers! Here is a special Playtime that is just for you. Come meet new friends and join in on the fun as your Cruise Staff team takes you through interactive activities made just for you!



SALUDOS AMIGOS FIESTA

D Lounge, Deck 4, Midship - 10:15 p.m.

Bring the family out to this interactive dance party featuring The Three Amigos. We will party with Donald Duck, learn Salsa, Merengue and have a Latin good time!

FAMILY SUPERSTAR KARAOKE

D Lounge, Deck 4, Midship - 10:45 p.m.

Join your Cruise Staff in D Lounge tonight and sing along to your favorite song - fun for everyone.



ADULT ACTIVITY HIGHLIGHTS

SENSES SPA FITNESS CLASSES & SEMINARS

Sunrise Stretch - Senses Fitness Center - 7:00 a.m.

Fab Abs - Senses Fitness Center - 7:30 a.m. & 5:00 p.m.

Body Sculpt Boot Camp (Nom. Fee) - Senses Fitness Center - 9:00 a.m.

Secrets To A Flatter Stomach - Senses Spa & Salon - 10:00 a.m.

Back Pain Solutions - Outlook - 10:30 a.m.

Facial Workshop - Senses Spa - 11:00 a.m.

Posture Analysis - Senses Spa & Salon - 11:30 a.m.

Pathway to Yoga - Senses Fitness Center - 4:00 p.m.



TASTING CLASSES

Whiskey Tasting (21+) - Meridian (Nom. Fee Pre Book) - 10:30 p.m.

Please make reservations for tastings at Guest Services for a nominal fee.

Tasting Seminars are only for Guest's 21 and Older.

CLUB 18*21 - SOCIAL

Cove Cafe, Deck 11, Forward - 11:45 a.m.

CLUB
18*21

CLUB 18*21 - ARR-CADE SOCIAL

Arr-Cade, Deck 11, Aft - 5:00 p.m.

CLUB 18*21 - MIXER

O'Gills Pub, Deck 4, Aft - 10:00 p.m.

ART OF THE THEME SHOW TOUR (18+)

Pre-Book at Guest Services, Deck 3, Midship - 9:30 a.m.

Join us on a guided ship tour and discover the key ingredients that make the Disney Fantasy cruise ship one-of-a-kind.

50 MOVIE QUOTES TRIVIA

O'Gills Pub, Deck 4, Aft - 4:00 p.m.

"Life is like a box of Chocolates" Know the movie? Join your Cruise Staff and test your Movie Quote knowledge.

POP!

The Tube, Deck 4, Aft - 10:00 p.m.

Have you been told you are full of useless information about pop culture? If the answer is "Yes", then you have what it takes to play the high energy game show all about the world of Pop!

\$5,000 MEGA JACKPOT BINGO

D Lounge, Deck 4, Midship

Card Sales - 10:30 a.m.

Game Starts - 10:45 a.m.

It's big, it's massive, it's supersized. It's \$5,000 MEGA jackpot bingo! Take home \$5,000 if you can cover your card in 46 numbers or less. If not, we carry on to play for the biggest cash prize of the session.



MEGA RAFFLE JACKPOT BINGO

D Lounge, Deck 4, Midship

Card Sales - 7:15 p.m.

Game Starts - 7:30 p.m.

Join your Cruise Staff for family Bingo fun! Four cash prize games. Plus, great raffle prize packs to be won and free Disney goodies for all in attendance! Don't miss out on the fun!

YOUTH ACTIVITY HIGHLIGHTS

DINE & PLAY

A convenience for families dining at 8:15 p.m., our Youth Activities Counselors will be available at 9:15 p.m. at the entrance of Royal Court, Enchanted Garden and Animator's Palate dining rooms to bring registered children to join the fun in the Youth Activity areas.



Deck 5, Midship (7-1440)
(3-12 years old) 9:00 a.m. - 11:00 p.m.

ALOHA LUAU

9:15 a.m.

It's party time, Hawaiian style! Come join us for a Luau experience and learn how to dance like Lilo & Stitch.

DISNEY ANIMATION: CREATING A CHARACTER

2:00 p.m.

Go behind the scenes at Walt Disney Animation Studios as Walt Disney himself talks about his most famous characters, then learn the basic techniques of drawing Mickey and Donald in this fun and interesting enrichment program.



Deck 5, Midship (7-1445)
(3-12 years old) 9:00 a.m. - 12:00 mid

DETECTIVE SCHOOL

3:15 p.m.

Goofy needs the help of the children from the Oceaneer Lab to solve a mystery!

ANYONE CAN COOK

7:15 p.m.

Anyone can cook as we work together to create some of our favorite treats.



Deck 13, Midship (7-9743)
(11-14 years old) 10:00 a.m. - 1:00 a.m.

ANIMATION CELLS

12:00 p.m.

Learn what it takes to be a Disney Animator, then put your new skills to the test as you create your very own animation cell.

THAT'S HILARIOUS

7:30 p.m.

Ever wanted to show off your comedy skills? Then be a part of the cast for the crazy improv show "That's Hilarious" and put on a live show for your and friends.



Entrance on Deck 4, Forward (7-9418)
(14-17 years old) 10:00 a.m. - 2:00 a.m.

DREAM NOW! SEA HOW! - THEATRICAL

11:00 a.m.

Imagine a job where You are the person who brings to life the characters and their stories that have been imagined, dreamed and created. This is where you will meet one of the current Disney performers and will go behind the scenes and experience the magic that is created through entertainment.

ANIMATION CELLS

1:45 p.m.

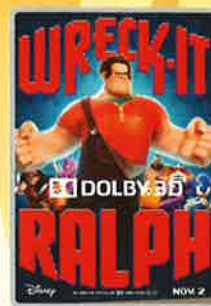
Learn what it takes to be a Disney Animator, then put your new skills to the test as you create your very own animation cell.

BUENA VISTA THEATRE

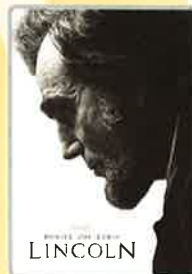
Today's Movies



1:30 a.m.
Run Time: 1 hr 40 min
Rating: PG



8:30 a.m.
Run Time: 1 hr 55 min
Rating: PG



2:30 p.m.
Run Time: 2 hr 30 min
Rating: PG - 13



5:45 p.m. & 8:15 p.m.
Run Time: 1 hr 24 min
Rating: PG



10:30 p.m.
Run Time: 2 hr 22 min
Rating: PG-13



Have you been told you are full of useless information about pop culture? If the answer is "Yes", then you have what it takes to play the high energy game show all about the world of Pop!

**The Tube (18+),
Deck 4, Aft,
10:00 p.m.**



Join us as we give you an entertaining taste of Europe. From Italy, France, to Ireland and London and best of all you won't even have to leave the ship!

**The Tube (18+),
Deck 4, Aft,
11:00 p.m.**

YOUTH ACTIVITIES OPEN HOUSE

Open House is an opportunity for all to come and participate in a variety of exciting activities and free time in the Oceaneer Club, Lab and Edge throughout the cruise. During these times secured programming will still be offered in the other venue for those looking to check their children into care.

Disney's Oceaneer Lab: 1:00 p.m. - 2:30 p.m.
Disney's Oceaneer Club: 9:00 a.m. - 10:00 p.m.
Edge: 9:00 a.m. - 10:00 a.m.

MORE TO ENJOY WHILE ONBOARD



ADVENTURES BY DISNEY

Join us for a special presentation on Thursday to learn what traveling with Adventures by Disney is all about. See our Adventure Guide on Deck 4, Midship, about saving 10% when you book onboard.



PORT & SHOPPING PRESENTATION

Cozumel is the largest tax and duty free shopping port in the Western Caribbean. Learn about everything from Vanilla to Diamonds & Swiss Time Pieces. All to attend will receive a free Sea Shell Charm and the chance to win a Larimar gemstone pendant. 11:00 a.m. Buena Vista Theatre, Decks 4 & 5, Forward.



DISNEY VACATION CLUB® GROUP PREVIEW

Want to learn more about taking magical vacations year after year? Please see a Disney Vacation Club representative on Deck 4, Midship, or call 7-2805 from your stateroom phone for more information about our interactive group presentation.

ONBOARD AIRLINE CHECK IN

If you would like to have your boarding passes printed for you onboard and have your luggage taken to the airport for you, register by midnight tomorrow. If you have a Disney Cruise Line airport transfer to Orlando International Airport and fly with one of the participating airlines, stop at Guest Services, Deck 3, Midship to register.

ARR-CADE

Where can you be a ninja, play the guitar like a rock star, race a car down the streets of Tokyo and along the way WIN some great prizes? Arr-cade located Deck 11, Aft, where the pirates play.

ON DEMAND TV

Watch Disney movies, Hollywood features, ABC Shows, and even captioned content, plus much more "On Demand" for FREE in the comfort of your stateroom! Bookmark your movie and come back to watch it later. Press MENU on your stateroom television remote control, and follow the prompts.



Welcome to Costa Maya, a secluded destination on Mexico's stunning Riviera Maya! The port of Costa Maya is booming and there are many amazing new Port Adventures to choose from. There is limited availability on tours, so stop by the Port Adventures Desk, Deck 5, Midship, to reserve your place. Don't forget to plan ahead for Castaway Cay, where only a few Stingray encounters remain available.

SHOPPING

SOPHIA FIORI DIAMOND TRUNK SHOW

Sophia Fiori is the world's leader in vivid colored diamonds and jeweler to the stars. The Sophia Fiori team has brought with them over \$1 million in diamonds at all price points from \$500 up to extravagant connoisseur pieces. White Caps, Deck 3, Forward.

OFFICER PIN TRADING

Come and trade pins with the officers of the Disney Fantasy at 7:30 PM in Preludes, Deck 3, Forward.

H2O BATH COLLECTION

Treat yourself to the ultimate indulgence with H2O bath products. H2O offers shampoo, conditioner, lip balm, hydrating body lotion and after sun care. Available in White Caps, Deck 3, Forward.

VISTA GALLERY

Toy Story, Monster's Inc., Finding Nemo, Up - what's your favorite Disney-Pixar film? You have a chance to purchase a piece of Disney-Pixar artwork to take home with you today! Just stop by the Vista Art Gallery to see the Disney-Pixar Collection. Vista Art Gallery, Deck 4, Midship.

BIBBIDI BOBBIDI BOUTIQUE

Make your Princess's fantasies come true with the Fantasy package. She gets her very own headband, tutu, and t-shirt. Deck 5, Midship.

CHAMILIA EXCLUSIVE!

Remember your Disney Cruise forever! Get 10% off the Disney ship charm when you purchase a Chamilia bracelet, necklace, or pair of earrings. Offer only available in White Caps, Deck 3, Forward.

Due to port regulations, when the ship is docked, the stores will remain closed.

SALON TASTER SPECIAL

- Scalp Massage
- European Facial
- Hand Treatment
- Sunglow Makeover
- Conditioning Hair Treatment
- Eye Collagen Treatment
- Foot & Ankle Massage
- Neck & Shoulder Massage

Three for 99.00
Five for 119.00
All Eight for 139.00

TODAY'S SHOPPING SPECIAL

Stop by White Caps to try on the world's most memorable white diamond pieces and commemorate your cruise.

White Caps, Deck 3, Forward.

Shutters DIGITAL PACKAGES

Do you only need a small number of digital images of your photos? We now offer two digital packages where you can choose your selected images in the comfort of your own home! Send them to friends or upload them on social media sites, the choice is yours! Please see one of our friendly Shutters staff to explain this great new product. Your photos will be available for viewing on our interactive kiosks in Shutters Digital as well as in your personal photo folder in Shutters, Deck 4 Midship, Conditions applies.

**Please note that photos are available for viewing on our interactive photo kiosks approximately five hours after being taken and are only available for purchase during this cruise.*

IMPORTANT INFORMATION

Security Notice

All Guests (including children) who wish to disembark the ship are required to present their Key to the World card at the gangway. A photo ID is also required for those Guests who are 18 years of age or older. Guests under the age of 18 are required to have a Parent, Guardian or other responsible adult sign an authorization form at the time it is given out if they wish to go ashore unaccompanied. Authorization forms are available at the gangways and Guest Services.

Please Note:
Please remember to use plenty of sunscreen & mosquito/ Insect repellent when venturing ashore.

Cold and Flu Reminder

Please wash hands frequently and thoroughly; particularly before meals. Contact the Health Center by dialing 7-1923, should anyone in your party become ill.

Corridor Quiet Hours

As a courtesy to all our Guests, please recognize quiet hallway hours from 10:00 p.m. til 8:00 a.m.

Inclement Weather

For the safety of all Guests, outdoor events may be changed due to unforeseen weather conditions.

Environmental Message

With Disney's commitment to the Environment, please refrain from throwing anything over the Ship's side. Thank you!

No Reserved Seats Policy

As a courtesy to all our Guests, we kindly advise that the saving of seats is not permitted in the Walt Disney Theatre, and the saving of the sun loungers is not permitted on Deck 11, 12, and 13. Items left unattended will be returned to lost and found at Guest Services, Deck 3 Midship.

Smoking

For the comfort of our guests the following areas are designated as Smoking areas: - Promenade Deck (Deck 4), smoking is permitted Port Side, Aft only from 6:00 p.m., to 6:00 a.m.
- Currents - Deck 13, Forward, Port Side.
- Meridian Bar - Deck 12, Aft, Port Side, outside.
- Smoking is permitted on stateroom verandahs.
Smoking is prohibited inside all guest staterooms. Guests found smoking in their staterooms will be charged a \$250 stateroom recovery fee.

Walt Disney Theatre

Theatrical performances may use artificial fog, strobe lights, pyrotechnics and other special effects. For the safety of our performers and the comfort of those around you, the use of any photography, video recording device or any electronic equipment is prohibited.

Verandah Safety

Please do not leave any combustible materials on your balcony when not present in your stateroom for safety reasons.

Morning	8:30	8:45	9:00	9:15	9:30	9:45	10:00	10:15	10:30	10:45	11:00	11:15	11:30	11:45	12:00	12:15	12:30	12:45	1:00	1:15	1:30
FUNNEL VISION	Dumbo (G) Funnel Vision						Disney Channel on Deck Funnel Vision						Monsters, Inc. (G) Funnel Vision								
MOVIES	Wreck-It Ralph (PG) Buena Vista Theatre																				
CHARACTER	Mickey Dk 4, Mid				Princess Gathering Lobby Atrium				Tinker Bell Lobby Atrium (V)				Tinker Bell Lobby Atrium (V)								
FUN FOR ALL AGES			Disney Animation: Persistence of Vision D Lounge				Bingo Pre Sales \$5,000 Mega Jackpot Bingo D Lounge				Board Games Available in O'Gills Pub										
	Family Crafts - Card Making O'Gills Pub				Disney Vacation Club Group Preview The Tube				Disney Tune Trivia La Piazza				Port Adventures - Please check your tickets for meeting times and locations								
ADULTS	Friends of Bill W. Outlook				Art of The Theme Show Tour Pre-Book at Guest Services				Back Pain Solutions Outlook				Shopping Highlights Buena Vista Theatre				Posture Analysis Senses Spa & Salon				
	Boot Camp (Nom. Fee) Senses Fitness Center				Pub Quiz O'Gills Pub				Facial Workshop Senses Spa				Club 18*21 Social Cove Cafe								
VIBE 14-17 YEARS OLD	Coffee Break						Dream Now! Sea How! - Theatrical						Sun Deck Fun								
EDGE 11-14 YEARS OLD	Open House						Checkers Challenge						Four Square								
OCEANEER LAB 3-12 YEARS OLD	Super Sloppy Science - Eggsperiments						GAGA Ball						Craft Corner								
							Human Bingo						Magic Show								
OCEANEER CLUB 3-12 YEARS OLD	Open House						Journey to Neverland						Puzzle Playtime with Mickey & Friends								
	Aloha Luau						Make Your Own Puppet						Matinee Movie								
													Parachute Games								

Afternoon	1:45	2:00	2:15	2:30	2:45	3:00	3:15	3:30	3:45	4:00	4:15	4:30	4:45	5:00	5:15	5:30	5:45	6:00	6:15	6:30	6:45
FUNNEL VISION	Up (PG) Funnel Vision						Pixar Short Films (G) Funnel Vision						The Emperor's New Groove (G) Funnel Vision								
MOVIES	Lincoln (PG-13) Buena Vista Theatre												Frankenweenie (PG) Buena Vista Theatre								
CHARACTER							Daisy Lobby Atrium (P)		Buzz Lobby Atrium (P)		Donald Lobby Atrium (P)		Phineas & Ferb Lobby Atrium (V)		Pinocchio Dk 4, Mid						
FUN FOR ALL AGES	Board Games Available in O'Gills Pub						(PG) Thr. 41mins. Walt Disney Theatre						Piano Requests with Tim Adshed La Piazza								
	Family Crafts - Paper Plane Making La Piazza								Playhouse D Lounge D Lounge												
							Xbox Kinect™ - Wipeout Challenge O'Gills Pub														
ADULTS	Books and Magazines Available in Cove Cafe										Pathway to Yoga Senses Fitness Center		Live Guitar Deck 12, Forward		Club 18*21 - Arcade Social Arcade				Pub Quiz O'Gills Pub		
							50 Movie Quotes Trivia O'Gills Pub				Fab Abs Senses Fitness Center										
VIBE 14-17 YEARS OLD	Animation Cells				Smoothie Hour				Dive into DJ'ing				Disney Animation: Creating a Character				Anyone Can Cook: Cupcakes				
EDGE 11-14 YEARS OLD	Chillin' in the Edge				Anyone Can Cook: Pizza				Pizza Party				GAGA Ball				Ninja				
OCEANEER LAB 3-12 YEARS OLD	Open House				XBox® Kinect™				Detective School				Marshmallow Olympics				Wii Challenge				
					Craft Madness				Bingo				Youth Dinner				Parachute Games				
OCEANEER CLUB 3-12 YEARS OLD	Matinee Movie				Play-Doh Creations				Once Upon a Time								Connect Four Challenge				
	Disney Animation: Creating a Character				Memory Wall				Monster's Game Galore								Picture This				
OUT AND ABOUT	Basketball Challenge Goofy's Sports Deck																				

Evening	7:00	7:15	7:30	7:45	8:00	8:15	8:30	8:45	9:00	9:15	9:30	9:45	10:00	10:15	10:30	10:45	11:00	11:15	11:30	11:45	12:00
FUNNEL VISION	Bolt (PG) Funnel Vision						The Game Plan (PG) Funnel Vision														
MOVIES	Frankenweenie (PG) Buena Vista Theatre												The Avengers (PG-13) Buena Vista Theatre								
CHARACTER	Belle Lobby Atrium (P)		Buzz Lobby Atrium (H)		Phineas & Ferb Lobby Atrium (V)		Woody Lobby Atrium (H)		Woody Lobby Atrium (H)		Phineas & Ferb Lobby Atrium (V)		Goofy Dk 4, Mid								
FUN FOR ALL AGES	Bingo Pre Sales		Mega Raffle Jackpot Bingo D Lounge								Disney Trivia D Lounge				Family Superstar Karaoke D Lounge		Viva Fiesta D Lounge				
			Magic Dave The Tube - Magic										Live Music with Roberto and Daria Lobby Atrium		Live Music with Roberto and Daria Lobby Atrium						
			Officer Pin Trading Preludes																		
ADULTS	NCAA Basketball O'Gills Pub				Pub Quiz O'Gills Pub				Pop! The Tube				80's Music Challenge The Tube		Viva Europa with Guest DJ Nick Dean The Tube						
					Piano Tribute to the Beatles La Piazza				Live Music La Piazza		Club 18*21 Social O'Gills Pub		Live Music with June Gypsies La Piazza		Live Music La Piazza						
VIBE 14-17 YEARS OLD	ESPN Dream Team Draft Day - Football				Chillin' in Vibe				Pump It Up				Mad Gab		Gender Wars						
EDGE 11-14 YEARS OLD	Elephant Soccer		That's Hilarious		Magic Show				Photo Hunt				Picture This		Gender Wars		GAGA Ball				
OCEANEER LAB 3-12 YEARS OLD	Friendship Bracelets		Charades				Stop The Boat				Games Galore		Get the Hook		Cartoon Corner						
	Anyone Can Cook								Piston Cup Challenge				4 Corners								
OCEANEER CLUB 3-12 YEARS OLD	Create A Picture Frame		Bingo		Dance Party		Camp Rocking Out!		Cartoon Corner												
			Magic Playfloor		Coloring Corner																

Symbol for activities that will be repeated during the cruise

Youth Activities Open House

FOLD

FOLD

FOLD

IN THE SPOTLIGHT SERIES

SOVE IT! SERIES

JUMP UP! SERIES

CREATE & INVENT SERIES

CLUBHOUSE SERIES

STORYBOOK SERIES

Fold along the dotted lines and take me with you so you don't miss any of the fun!

TUESDAY, FEBRUARY 5, 2013 - COSTA MAYA

BUENA VISTA THEATRE



1:30 a.m.
Run Time: 1 hr 40 min
Rating: PG

8:30 a.m.
Run Time: 1 hr 55 min
Rating: PG

2:30 p.m.
Run Time: 2 hr 30 min
Rating: PG-13

5:45 & 8:15 p.m.
Run Time: 1 hr 24 min
Rating: PG

10:30 p.m.
Run Time: 2 hr 22 min
Rating: PG-13

Character Appearances

MICKEY MOUSE
Deck 4, Balcony
9:15 a.m., 4:45 p.m. & 7:45 p.m.
Lobby Atrium (P) - 10:00 p.m.

GOOFY
Goofy's Sports Deck - 10:00 a.m.
Deck 4, Balcony - 10:00 p.m.

PRINCESS GATHERING
Lobby Atrium - 10:00 a.m.

TINKER BELL
Lobby Atrium (V)
10:30 a.m. & 11:30 a.m.

PRINCESS MINNIE
Deck 4, Balcony - 11:30 a.m.

DAISY DUCK
Lobby Atrium (P) - 4:45 p.m.

BUZZ LIGHTYEAR
Lobby Atrium (H)
5:00 p.m., 7:30 p.m. & 10:00 p.m.

PRINCESS AURORA
Deck 4, Balcony - 5:15 p.m.

DONALD DUCK
Lobby Atrium (P) - 5:15 p.m.
Deck 4, Balcony - 9:30 p.m.

PHINEAS & FERB
Lobby Atrium (V)
5:30 p.m., 7:45 p.m. & 9:45 p.m.

WOODY & JESSIE
Lobby Atrium (H)
5:30 p.m., 8:00 p.m. & 9:30 p.m.

PINOCCHIO
Deck 4, Balcony - 5:45 p.m.

ARIEL
Lobby Atrium (P) - 5:45 p.m.

MINNIE MOUSE
Deck 4, Balcony - 7:15 p.m.
Lobby Atrium (P) - 9:30 p.m.

BELLE
Lobby Atrium (P) - 7:15 p.m.

PRINCESS TIANA
Lobby Atrium (P) - 8:00 p.m.



(H) Hallway - (S) Starboard Side - (P) Port Side - (V) Vestibule
For details of daily Disney character appearances, refer to the character line in your Navigator Grid or the digital character board in the Lobby Atrium.

YOUTH ACTIVITIES THEMED EXPERIENCES

- CLUBHOUSE SERIES** focuses on movement and features content which appeals to younger children.
- JUMP UP! SERIES** includes large ground games & movement-oriented activities.
- SPOTLIGHT SERIES** focuses on children's stage presence with lots of activities and enthusiasm.
- STORYBOOK SERIES** is designed with a strong connection to the Disney classic stories.
- CREATE & INVENT SERIES** will have a tactile focus allowing children to create and admire their work.
- SOLVE IT! SERIES** are less active, but will challenge children with problem/solutions-based activities.
- YOUTH ACTIVITIES OPEN HOUSE** A non-secured program with activities for families, adults and children of all ages to enjoy together.

SHIP DIRECTORY

YOUTH ACTIVITIES	
DISNEY'S OCEANEER CLUB	Deck 5, Mid 9:00 AM - 11:00 PM
DISNEY'S OCEANEER LAB	Deck 5, Mid 9:00 AM - 12:00 MID
EDGE	Deck 13, Mid 10:00 AM - 1:00 AM
VIBE	Deck 4, Fwd 10:00 AM - 2:00 AM
IT'S A SMALL WORLD NURSERY	Deck 4, Mid 9:00 AM - 11:00 PM
RECREATION	
AQUADUCK	Deck 12, Mid 9:00 AM - 10:00 PM
AQUALAB	Deck 12, Aft 1:00 PM - 6:00 PM
DONALD'S POOL	Deck 11, Mid 6:00 AM - 12:00 MID
GOLF/SPORTS SIMULATORS	Deck 13, Aft 9:00 AM - 6:00 PM
GOOFY GOLF	Deck 13, Aft 8:00 AM - 10:00 PM
GOOFY'S SPORTS DECK	Deck 13, Aft 8:00 AM - 10:00 PM
MICKY'S POOL	Deck 11, Mid 6:00 AM - 11:00 PM
MICKY'S SLIDE	Deck 11, Mid 9:00 AM - 6:00 PM
MIDSHIP DETECTIVE AGENCY	Deck 2 & 5, Mid 9:00 AM - 10:00 PM
NEMO'S REEF	Deck 11, Mid 9:00 AM - 7:00 PM
PORT ADVENTURES DESK	Deck 5, Mid 7:00 PM - 8:30 PM
QUIET COVE POOL	Deck 11, Fwd 6:00 AM - 12:00 MID
SATELLITE FALLS	Deck 13, Fwd 6:00 AM - 6:00 PM
SENSES FITNESS CENTER	Deck 11, Fwd 6:30 AM - 10:00 PM
GENERAL INFORMATION	
ARR-CADE	Deck 11, Aft 24 HOURS
ADVENTURES BY DISNEY	Deck 4, Mid 9:00 AM - 12:00 PM
DISNEY VACATION CLUB	Deck 4, Mid 5:00 PM - 8:00 PM
FUTURE CRUISE SALES DESK	Deck 4, Mid 9:00 AM - 12:00 PM
GUEST SERVICES	Deck 3, Mid 7:30 PM - 10:30 PM
MEDICAL HEALTH CENTER	Deck 1, Fwd 9:30 AM - 11:00 AM
PORT & SHOPPING DESK	Deck 4, Mid 4:30 PM - 7:00 PM
PRELUDES	Deck 3, Fwd 5:45 PM - 6:30 PM
SENSES SPA AND SALON	Deck 11, Fwd 8:00 PM - 8:45 PM
SHUTTERS PHOTO GALLERY	Deck 4, Mid 10:00 AM - 12:00 PM
SHUTTERS DIGITAL	Deck 4, Mid 5:00 PM - 10:30 PM
SHOPPING	
BIBBIDI BOBBIDI BOUTIQUE	Deck 5, Mid 9:00 AM - 9:00 PM
MICKY'S MAINSAIL	Deck 3, Fwd 9:00 AM - 11:00 AM
QUACKS	Deck 11, Mid 6:30 PM - 11:00 PM
SEA TREASURES	Deck 3, Fwd 9:00 AM - 11:00 AM
VISTA GALLERY	Deck 4, Mid 6:30 PM - 10:00 PM
WHITE CAPS	Deck 3, Fwd 9:00 AM - 11:00 AM
WHOZITS & WHATZITS	Deck 11, Mid 9:00 AM - 11:00 AM

DINNER MENU
Animators' Palace, Prince & Princess
Enchanted Garden, Prince & Princess
Royal Court, Prince & Princess
Dining Times: 5:45 p.m., 8:15 p.m.,
(No Alcohol)

DRINK OF THE DAY
Key Lime Margarita
(No Alcohol)
Cranberry New-Itz
(No Alcohol)

WEATHER FORECAST
Tuesday, Partly Cloudy
High: 78°F/26°C
Wednesday, Partly Cloudy
High: 78°F/26°C

Evening Attire: Cruise Casual

DINING & LOUNGES

BREAKFAST

CABANAS CONTINENTAL Deck 11, Aft 6:30 AM - 7:00 AM
CABANAS Deck 11, Aft 7:00 AM - 11:30 AM
ENCHANTED GARDEN Deck 2, Mid 8:00 AM - 10:45 AM
ROYAL COURT Deck 3, Mid 8:00 AM - 9:30 AM

LUNCH

CABANAS Deck 11, Aft 11:30 AM - 2:15 PM
ENCHANTED GARDEN Deck 2, Mid
FILLMORE'S FAVORITES Deck 11, Mid 10:30 AM - 6:00 PM
LUIGI'S PIZZA Deck 11, Mid 10:30 AM - 6:00 PM
ROYAL COURT Deck 3, Mid 12:00 PM - 1:30 PM
TOW MATER'S GRILL Deck 11, Mid 10:30 AM - 11:00 PM

DINNER

ANIMATOR'S PALATE Deck 3, Aft 5:45 PM & 8:15 PM
ENCHANTED GARDEN Deck 2, Mid 5:45 PM & 8:15 PM
ROYAL COURT Deck 3, Mid 5:45 PM & 8:15 PM
CABANAS TABLE SERVICE Deck 11, Aft 6:30 PM - 8:30 PM
PALO (18+) (Reservations Req. & Now. Fee Applies) Deck 12, Aft 6:00 PM - 8:30 PM
REMY (18+) (Reservations Req. & Now. Fee Applies) Deck 12, Aft 6:00 PM - 8:30 PM

LATE NIGHT SNACKS

LA PIAZZA (18+) Deck 4, Aft 10:45 PM - 11:45 PM
Luigi's Pizza Deck 11, Mid 9:30 PM - 12:30 AM

ADDED FEATURES

BEVERAGE STATION Deck 11, Mid 24 HOURS
EYE SCREAM Deck 11, Mid 11:00 AM - 11:00 PM
ROOM SERVICE Dial 0 24 HOURS

ENTERTAINMENT - LOUNGES - BARS

Adults must be 21 and older to consume alcoholic beverages.
BON VOYAGE Deck 3, Mid 10:30 AM - 11:00 PM
COVE BAR (18+) Deck 11, Fwd 10:00 AM - 11:00 PM
COVE CAFE (18+) Deck 11, Fwd 7:00 AM - 12:00 MID
CURRENTS (18+) Deck 13, Fwd 10:00 AM - 11:00 PM
D LOUNGE Deck 4, Mid SHOWTIMES
FROZONE TREATS Deck 11, Mid 10:00 AM - 10:00 PM
LA PIAZZA Deck 4, Aft 4:30 PM - 12:00 MID
MIRIAM (18+) Deck 12, Aft 5:00 PM - 12:00 MID
O'GILLS PUB Deck 4, Aft 4:00 PM - 12:00 MID
OOH LA LA (18+) Deck 4, Aft 5:00 PM - 12:00 MID
OUTLOOK Deck 14, Mid SUNSET TIMES
SKYLINE (18+) Deck 4, Aft 5:00 PM - 12:00 MID
THE TUBE (18+) Deck 4, Aft 10:00 PM - 2:00 AM
VISTA CAFE Deck 4, Mid 7:30 AM - 10:00 PM
WAVES Deck 12, Aft 10:00 AM - 6:30 PM

Consumers who order raw or partially cooked, ready-to-eat food of animal origin, are hereby informed that the food is not sufficiently cooked to ensure its safety.

All Ashore: Approx. 1:00 p.m.
All Aboard: 5:30 p.m.

IMPORTANT INFORMATION

Please check your Port Adventure tour tickets for meeting times and locations. Visit the Port Adventures Deck 5, Midship, for any questions.

SHIP'S AGENT IN COSTA MAYA IMPORTANT NUMBERS

Sr. Marco Souza
Carmichel, Coordinador General,
Aconsur, Mahahual, Q. Roo, Mexico
Tel: 52 983 834 5674 or 521 9837005253

Fire/Security: 7-3001
Medical Emergency: 7-3000
Health Center: 7-1923